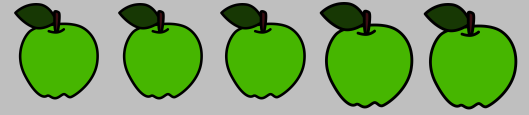


Public Skate



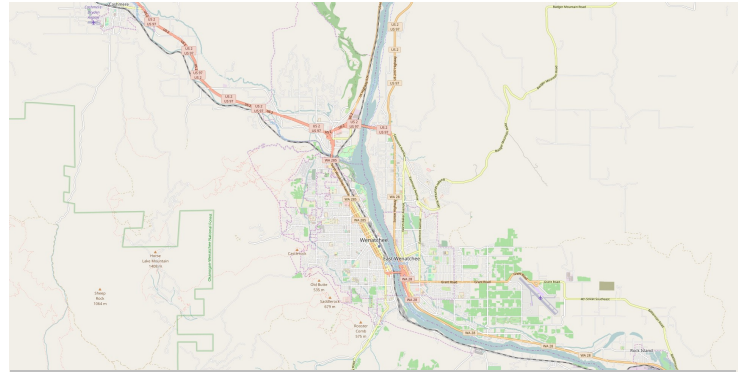
Facts: It's a normal ice skating rink and also the rink for the local ice-hockey team, the Wenatchee Wild

My Experience: I enjoyed my time there and had fun.

My personal conclusion: I saw the rental and the ice; I was there for 2 hours to go ice -skating with my host family

It's for everyone who wants to go ice-skating or watch hockey games

Yeah!!!!



Category of the sight: Sports Arena

GPS Coordinates:

Opening times: It depends on month and day. On Oct 23rd, 2016, it was open to the public from 1 to 3pm

Distance from Wenatchee: 0km

Price: 6\$ General Admission 4\$ Senior 3\$ Children 2\$ skate rental



My tipp:

Just go there and you'll have fun